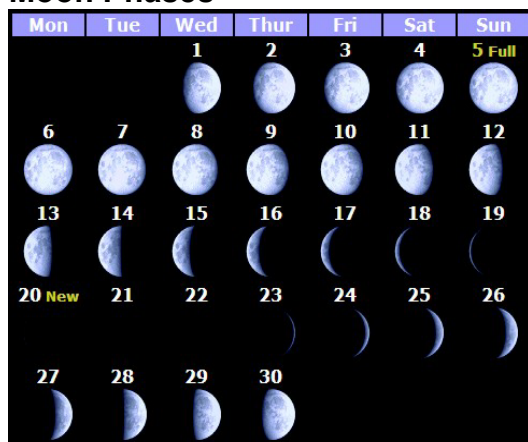


Astronomy for all

Events for November 2006



Moon Phases



Planets

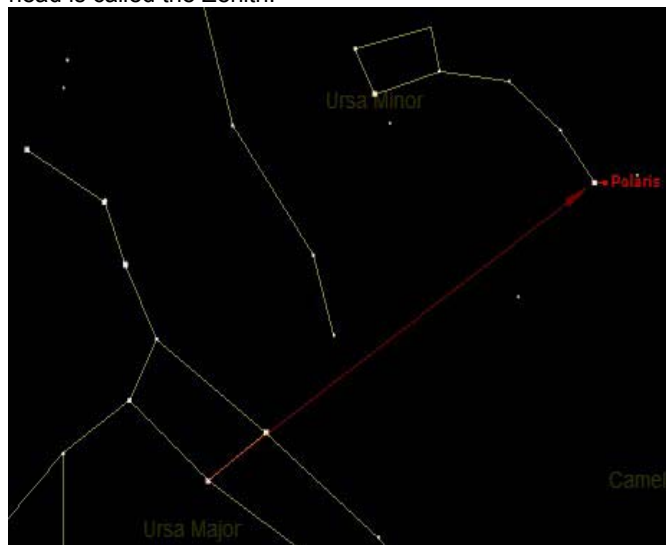
There is only one planet this month visible without the aid of a telescope and that is Saturn which is currently in the constellation Leo.



Saturn	
Date	Rise
1st	23:48
8th	23:23
15th	22:58
22nd	22:32
29th	22:05

Finding North

To find North draw a line through the last 2 stars of the big dipper and you will find Polaris, also known as the North Star. From this you can judge where the other compass points are. As you face Polaris – South is directly behind you, West is to your left and East to your right. The point directly above your head is called the Zenith.



Leonid Meteor Shower (From Nov 14th to 20th)

Peak 1 - Nov 17th 23:00 – ZHR estimated at 10-20
Peak 2 - Nov 19th 04:45 – ZHR estimated at 80+

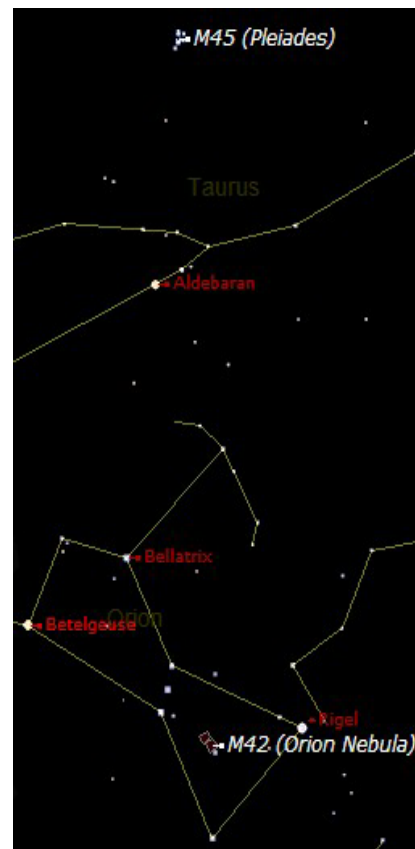
Of the two peaks listed, the first is the "standard" Leonid peak for which the ZHR will probably be around 10-20. The second peak is for a predicted encounter with a 2-revolution dust trail which should produce a higher ZHR. This predicted second peak is best timed for observers in western Europe.

Leonid activity can be seen from Nov 14-20. The Leonid radiant doesn't rise until the late evening, and is highest late in the night.

M45 - Pleiades Open Star Cluster & M42 - Orion Nebula

Both "Messier" targets look great in binoculars. You should be able to see 6 stars in M45 unaided but many more with binoculars. M45 contains about 500 stars.

M42 is the brightest diffuse nebula in the sky and the nearest star formation region to the Earth. Estimated to be 30 light years across and approx 1500 LY away.



Comet Swan (C2006 M4)

This shows the path of Comet Swan (C2006 M4) during the early evenings in November (approx 20:00). It should be visible as a fuzzy patch in a reasonable pair of binoculars.

